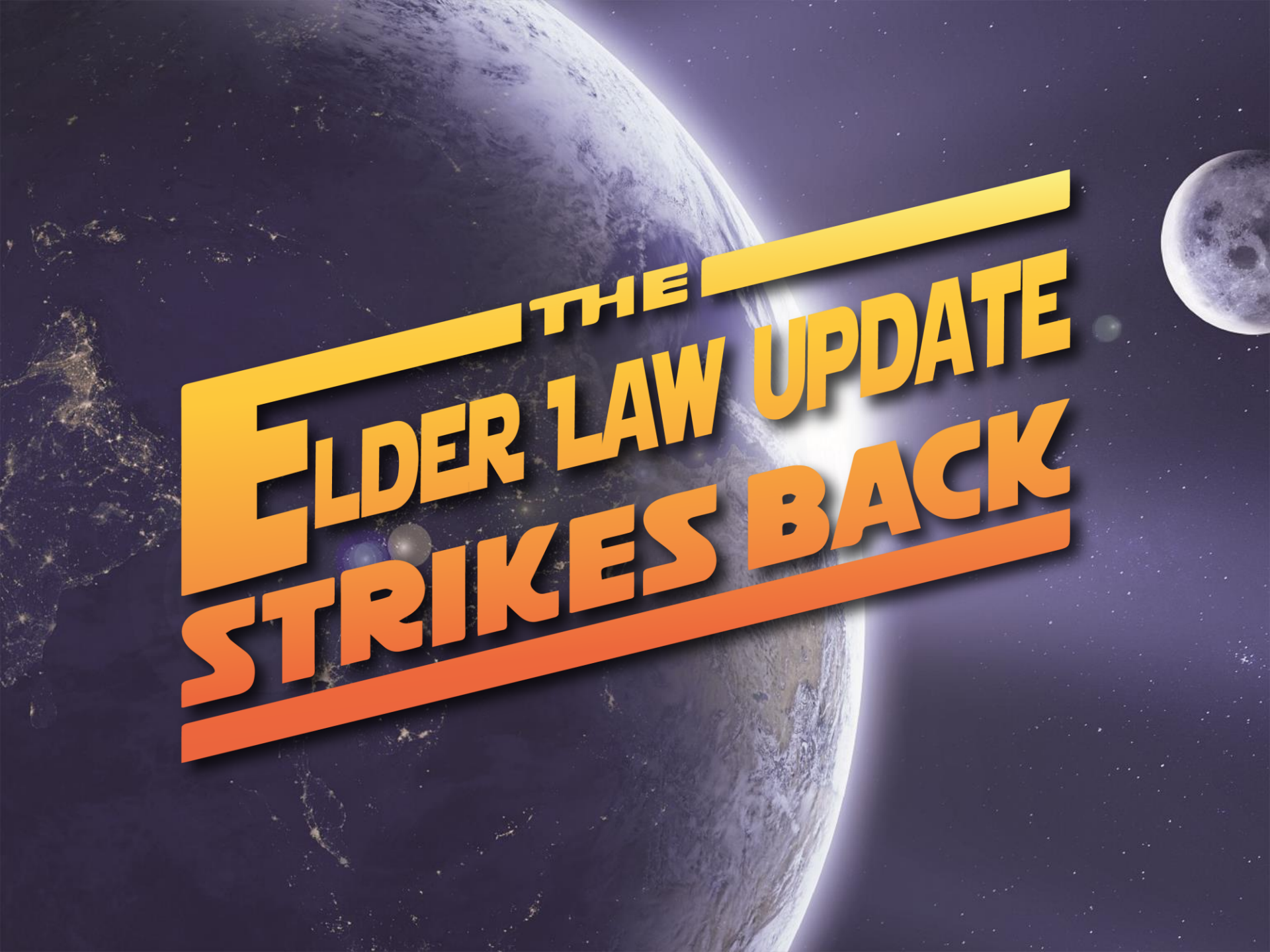


Marshall, Parker & Weber, LLC

**22ND
ANNUAL** **PROFESSIONAL UPDATE 2018**

The background of the image is a space-themed scene. On the left, a large portion of the Earth is visible, showing blue oceans and white clouds. On the right, the Moon is partially visible. The sky is dark blue with scattered white stars. The main text is overlaid on this scene, slanted diagonally from the top-left towards the bottom-right. The text is in a bold, sans-serif font. The word 'THE' is in a smaller size and is positioned above 'ELDER LAW UPDATE'. 'ELDER LAW UPDATE' is in a larger size and is positioned above 'STRIKES BACK'. The text is colored in a gradient from yellow to orange. There are two thick horizontal bars, one yellow and one orange, that frame the text from above and below respectively.

**THE
ELDER LAW UPDATE
STRIKES BACK**

Expanded Use of Medicaid Waivers

Section 1115

- Demonstration Program
- Promote Objectives of Medicaid
- Non - Waivable Provisions

Key Elements of 1115 Coverage Waivers

Proposed Features	AR	AZ	IN	KY	KS	MA	MI	ME	MS	NC	NH	NM	UT	WI
Premiums <i>(some states with lockout)</i>	✓	✓	✓	✓	✓	✓	✓	✓		✓		✓		✓
Cost Sharing	✓	✓	✓	✓		✓	✓	✓		✓	✓	✓	✓	✓
Work Requirements	✓	✓	✓	✓	✓			✓	✓	✓	✓		✓	✓
Healthy Behavior Incentives	✓	✓	✓	✓			✓					✓		✓
Non-Emergency Medical Transportation Waiver			✓	✓		✓								
Institution for Mental Disease Exclusion Waiver		✓	✓	✓	✓	✓	✓			✓			✓	✓
Retroactive Coverage Waiver	✓		✓	✓		✓		✓			✓	✓	✓	
Prompt Enrollment Waiver			✓	✓										
Drug Screening														✓
Limits on Enrollment Duration		✓											✓	✓
Partial Expansion	✓					✓								
Health Savings-Like Accounts		✓	✓	✓	✓		✓							
Late Renewal Paperwork Penalty/Lockout			✓	✓										
1927 Waiver for Closed Formularies						✓								

Kentucky's Waiver

- Work Requirement
- Coverage Lock-outs
- Waiting Periods
- Premiums and Terminations
- No Retroactive Coverage

Pennsylvania HB 2138

- Work Requirement
- Age 19-64
- 20 Hours per Week



Rollout of Community Health Choices

- Southwest Pennsylvania
- Long Term Services & Support
- Merged Waivers
- Options & Act 150

Community Health Choices

Three Plans

- AmeriHealth Caritas
- PA Health & Wellness
- UPMC Community Health Choices

Community Health Choices

- Notice to choose plan
- Medicaid only recipients
- Continuity of care provision



CHC Assessment Process

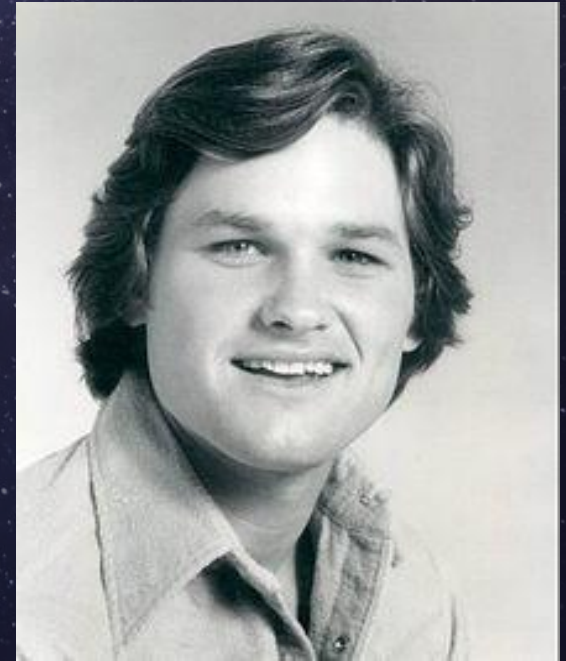
- Independent Enrollment Broker (IEB)
- Functional Eligibility Determination (FED)
- Independent Assessment Entity (IAE)
- InterRAI

MCO Appeal Process

- Grievance & Complaint



The Casting of Han Solo



Medicare Reimbursement System

- Skilled Nursing Facilities & Home Health
- Patient Driven Model

Budget Act Tax Changes

- 529 College Plans – Expanded Scope
- ABLE Accounts – Increased Contributions
- ABLE Accounts to 529 Plan Rollover
- Charitable Contribution Deduction Increased
- Medical Expense Deduction Increased
- FET Federal Exclusion Amount at \$11.2 million

Elder Abuse Prevention & Prosecution Act

- Abuse by Court Appointed Guardians
- Assistant US Attorney to Investigate
- Increased Prosecution

Solo Director Ron Howard



Uniform Fiduciary Access to Digital Assets Act

- Digital Assets
- Executors, Guardians, Agents and Trustees
- Content v. Catalogue

POLST Legislation

- Physician Order
- Transferable Between Medical Providers
- Training

Peter Falk's Law



Marshall, Parker
& Weber, LLC

Peter Falk's Law

- Visitation Rights
- Applies to Court Appointment Guardians
- Notice of Changes

Han & Leia

Leia: "I love you!"
Han Solo: "I know"



Revised Uniform Law on Notarial Acts

- Pecuniary Interest Prohibition
- Identification or Oath of Credible Witness
- Stamp, Record Keeping & Education Requirements

Electronic Notarization

- Senate Bill 595
- Video Record Required

The Estate of Isabel Wilner

- Lost Will
- Niece v. Charity
- Two Witnesses = Signature Identification Only

HAN SHOT FIRST!





Marshall, Parker & Weber, LLC

22ND
ANNUAL

PROFESSIONAL UPDATE 2018